

## Sample Questions



**iaea**  
THE INSTITUTE OF AUTOMOTIVE  
ENGINEER ASSESSORS

### Section 1 – Industry Underpinning Knowledge (ABI code standard)

<b>1. A catalytic converter would be found in which vehicle system?</b>	<b>2. When a petrol engine which is revving at 3000RPM what will the cam shaft revolve at?</b>
a) Air conditioning/climate control	a) 3000 RPM
b) Automatic gearbox	b) 6000 RPM
c) Exhaust system	c) 1500 RPM
d) SRS System	d) 9000 RPM
<b>3. The welding term 'MAG` stands for?</b>	<b>4. A one-piece body is known as?</b>
a) Metal active gas	a) Complete construction
b) Molecular assigned gas	b) Composite construction
c) Moulton assisted gas	c) Monocoque
d) Mechanical acetylene gas process	d) Platform construction
<b>5. On the markings found on the side wall of a tyre "205/55 R16 92H", what does the "H" signify?</b>	<b>6. The acronym A.D.A.S. stands for?</b>
a) The load ratio	a) Assisted dual air system
b) The speed ratio	b) Additional drum assisted servo
c) The aspect ratio	c) Advanced driver assistance system
d) Temperature rating	d) Autonomous driver automated signalling

Answers are at the end of the document.

## Sample Questions



**iaea**  
THE INSTITUTE OF AUTOMOTIVE  
ENGINEER ASSESSORS

### Section 3 – Salvage Categorisation

7. What salvage category is the vehicle? (assume all parts are available).

Vehicle:

<b>Make:</b> Volkswagen	<b>Model:</b> Golf TDI S
<b>Year of 1<sup>st</sup> registration:</b> 25/03/2004	<b>Mileage:</b> 78934
<b>PAV:</b> £2000	<b>Estimated cost of repair:</b> £4974

Damage details:

**New Panels & Parts**

R/H/R Door & Moulding, R/H/R Quarter panel , R/H Curtain Air bag,  
R/H/F Seat Air Bag, SRS ECU, R/H/F Seat Cover, R/H/front seat belt,  
L/H/Front seat belt, R/H/R Tyre, Headlining , R/H/F Door Moulding

**Repair Panels & Parts**

R/H/F Door , Rear Bumper, Geometry Test, R/H/R inner wheel House

### Photographs



A ☐ B ☐ S ☐ N ☐ No Category ☐

## Sample Questions



**iaea**  
THE INSTITUTE OF AUTOMOTIVE  
ENGINEER ASSESSORS

8. What salvage category is the vehicle? (assume all parts are available).

Vehicle:

<b>Make:</b> Mini	<b>Model:</b> Cooper
<b>Year of 1<sup>st</sup> registration:</b> June 2013	<b>Mileage:</b> 71456
<b>PAV:</b> £8750	<b>Estimated cost of repair:</b> £6551

Damage details:

**Details of damage sustained**

Glancing impact to L/H front ( A Post Kinked )

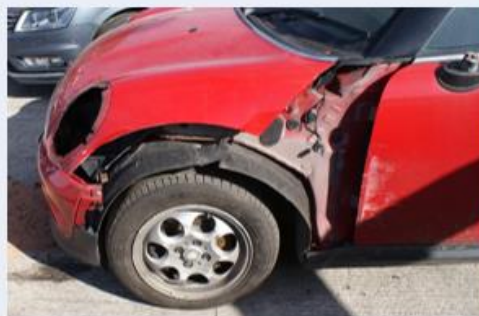
**New Panels & Parts**

Bonnet , Front Bumper, L/H Front Door , L/H outer A post, L/H Headlamp, L/H Front wing, Scuttle panel, L/H front wheel and tyre, Steering rack, Sill cover, Lower suspension arm

**Repair Panels & Parts**

L/H quarter panel

### Photographs



A ☐ B ☐ S ☐ N ☐ No Category ☐

## Sample Questions



**iaea**  
THE INSTITUTE OF AUTOMOTIVE  
ENGINEER ASSESSORS

9. What salvage category is the vehicle? (assume all parts are available).

Vehicle:

<b>Make:</b> Toyota	<b>Model:</b> <u>Auris</u> TR
<b>Year of 1<sup>st</sup> registration:</b> Sept 2009	<b>Mileage:</b> 76544
<b>PAV:</b> £2770	<b>Estimated cost of repair:</b> £2140

Damage details:

**Details of damage sustained**

Glancing blow along O/S

**New Panels & Parts**

R/H Rear quarter panel, R/H Rear lamp, Rear Bumper

**Repair Panels & Parts**

Front Bumper, Rear panel , R/H rear lamp panel

### Photographs



A ☐ B ☐ S ☐ N ☐ No Category ☐

## Sample Questions



**iaea**  
THE INSTITUTE OF AUTOMOTIVE  
ENGINEER ASSESSORS

### Answers

#### General Industry Knowledge

1. A catalytic converter would be found in which vehicle system?	2. When a petrol engine which is revving at 3000RPM what will the cam shaft revolve at?
<b>c) Exhaust system</b>	<b>c) 1500 RPM</b>
3. The welding term 'MAG` stands for?	4. A one-piece body is known as?
<b>a) Metal active gas</b>	<b>c) Monocoque</b>
5. On the markings found on the side wall of a tyre "205/55 R16 92H", what does the "H" signify?	6. The acronym A.D.A.S stands for?
<b>b) The speed ratio</b>	<b>c) Advanced driver assistance system</b>

#### Salvage Categorisation

7. Salvage Categorisation (Volkswagen)	A <input type="radio"/>	B <input checked="" type="radio"/>	S <input type="radio"/>	N <input type="radio"/>	No Category <input type="radio"/>
8. Salvage Categorisation (Mini)	A <input type="radio"/>	B <input type="radio"/>	S <input checked="" type="radio"/>	N <input type="radio"/>	No Category <input type="radio"/>
9. Salvage Categorisation (Toyota)	A <input type="radio"/>	B <input type="radio"/>	S <input type="radio"/>	N <input checked="" type="radio"/>	No Category <input type="radio"/>

